

**Special points of interest:**

- 2nd Saturday Celebration
- A message from a local pastor
- A look back at the holidays



# The Lighthouse Beacon

## Teen-to-Teen

It has been a whirlwind of a year and I hate that this is getting to you in March, but here is a little about what happened at the end of 2007.

On December 15, 23 adults took 21 students shopping at Target and then to lunch at Chick-Fil-A. Everything, from the \$100 per student to spend and the lunch,

was donated in one way or another.

We paired up each student with an adult. These adults were encouraged to mentor and share the love of Christ with the 21 students. It was a fun filled day, with rain and other exciting things to keep it interesting. There is no doubt that the youth were encour-

aged and had fun.

Through the time spent with these youth the adults have built relationships and some of the relationships have been furthered. We hope to have an even larger turnout for next year. If this is of interest to you please contact us! God Bless!

## 2nd Saturday Celebration

Tomorrow is the 2nd, 2nd Saturday of this year. Last year was a huge success and we had churches fill all of the dates for this year before last year even ended.

Now we don't keep exact numbers, but I know that at least 2 people were saved during last years Celebration's as well as others committing to a home church. After taking off the months of December and January we

had 35 people from the community at the service and gave food out to 48 families. The weather was beautiful and the worship was awesome.

We are praying that no matter how many people we serve each week, that Christ will use this ministry to reach and change lives.

Each service has worship, a free meal and free produce. If you

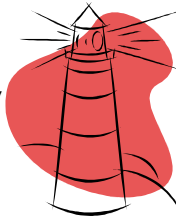
are interested in contributing, we are more than willing to open Dec and Jan for others to reach out!

### Inside this issue:

A Message from a...	2
What a Holiday Season!	2
News From the Storefront	3
Many thanks	3
You Can Get Involved Too!	3
Current Needs	4

**A Message From... Pastor Karl Newmann**

Jesus said that rivers of living water would flow from the hearts of those who believe in Him. (John 7:38) I have been privileged to see that happening over the last decade as the Lord has used Lighthouse Christian Ministries (previously Bay Area Christian Services) to bring encouragement, help and renewed life to many.



available to pray with and counsel with those in need. Gratefully, there are other helping organizations in the area but in the beginning we checked and found that most of the help available was given in love but not allowed, either by choice or governmental restriction, to offer that help in Jesus' name or to invite recipients to pray about their needs. That became a priority then and has remained one of the most exciting components of what Lighthouse has to offer.

opportunities Lighthouse has afforded for local churches to combine hearts and resources to be joyfully about the Lord's business. It has truly let the local world see that we are the Lord's disciples at work when they see folks loving each other in the process. To know that every dollar given accomplishes local ministry and to see that that happens with the Lord's love let's me know that the lighthouse is still steering people on the right course. P.S. I am eager to see the planned prayer tower become a reality and another way for local churches to be working together in the area.

As a pastor of a small church in the area I have seen this ministry relieve the load of local church benevolence ministries and join the ranks of those who render aid in Jesus' name. They are

Additionally, I have been thrilled to see the many op-

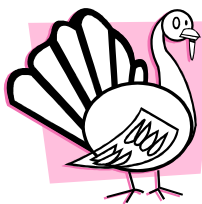
*"People cannot do any work that will make them right with God."*  
- Romans 4:5

**What a Holiday Season!**

Well the "holiday season" has come and gone and we are now in the year 2008, but how did 2007 end? Since there are so many churches and organizations that help during Christmas we took a back seat and helped more during Thanksgiving.

What was different? Well, we teamed up with local churches allowing small groups, Sunday school classes, families, etc. to adopt families and take them a thanksgiving dinner. Yes, we did some giving the old fashion way, but 150+ families were adopted.

Christmas, but like I said we took a back seat. So, we helped with those families who needed gifts or a meal for Christmas. We also had some families, small groups and Sunday school classes continue their adoption from Thanksgiving. We set out on one major endeavor and took 21 teenagers shopping. Altogether we were able to help 17 families and 21 teenagers during the Christmas season. Thanks to everyone who was involved during Thanksgiving and Christmas, we could not have done it without you!



Thanksgiving was truly a time of giving as well as being thankful. In past years we have collected food and created Thanksgiving bags to give out. Allowing us to help 110 families in 2006. This past Thanksgiving we were able to help 205 families receive meals (including the turkey) and about 60 more families just got turkeys.

This opened doors for the churches to share the love of Christ one-on-one. For those who helped, thanks so much! If you are looking forward to joining with us next year, please contact Lauren White.



We still helped during

## News from the Storefront

As you may or may not know we closed the store in League City. On December 22, 2007 we said thank you to the last customer of the day and ended another chapter in the history of LCM; only to begin another as we set out to combine the two stores.

so far—not just with the “looks” of things; but because we felt God was leading (and still does) us to refine our focus back on the Bacliff, San

Leon, Bayview Areas. We are planning expansions to the Bacliff store, which will enable us to better serve our customers and clients.



Progress has been made and we are happy with the results

We thank you for your continued support. We appreciate the donations and your prayerful support of this ministry— God Bless You!

- Linda

## Many Thanks!

“Those people who know they have great spiritual needs are happy, because the kingdom of heaven belongs to them.”  
-Matthew 5:3

The following thanks for all your help over the past few months...

Clear Creek Community Church  
League City UMC  
Ecclesia-Clear Lake  
Bay Harbour UMC  
Gloria Dei Lutheran Church  
Bay Area Community Church

M&M Furniture  
Kroger  
Bacliff Assembly of God  
Church of God of Prophecy  
Bayshore Friends Church  
Gateway Community Church  
Shipley Donuts-League City  
George Click  
Zehner Jardina  
Karl Newmann  
Esther Osborne  
Dave and Carla Vanderweide  
Mike and Donna Maples

Lucy Gill  
Dr. Paul Torre  
Mike & Kathy Miller  
Vivan Miller  
Frank Tamborella  
Protech Collision  
Jody Bosworth  
David Armiger  
Jerry Jones  
Cindy & Chris Jarnack  
Gayle Yates  
Gregory and Debra Penner  
And many others...

*Merci*

## You Can Get Involved Too!

There are many ways that you can support Lighthouse Christian Ministries and get involved.

You can donate:

**Time**  
**Money**  
**Goods**

**Time:** By Volunteering.

**Money:** By sending in a donation to help with our benevolence or food programs.

**Goods:** By bringing in your unwanted items so that we can sell them to others, in return we can use the proceeds to help serve others.

**Goods:** By shopping in our resale shops.

### To Donate Time:

Contact Lauren White:  
281-339-3033  
Lighthousechristianministries@gmail.com

### To Donate Money:

Send to:  
Lighthouse Christian Ministries  
800 Grand Ave, Bacliff 77518

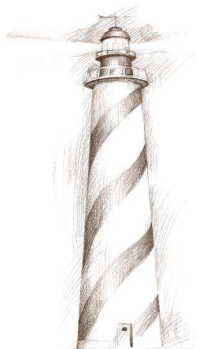
### To Donate Goods:

Contact Linda Cardella:  
281-339-3033  
L1960c@cs.com  
800 Grand Ave, Bacliff  
209 W. Main, League City

Many thanks to Gloria Dei Lutheran Church for printing our newsletter!

Lighthouse Christian Ministries  
800 Grand Ave  
Bacliff, Tx 77518

Phone: 281-339-3033  
Email: [lighthousechristianministries@gmail.com](mailto:lighthousechristianministries@gmail.com)



## Our Current Needs

### Medical Clinic:

Disposable Gloves  
Thermometers  
X-ray Machine  
X-ray table  
Lab materials  
Doctors and Nurses :)  
(We are looking to expand.)

Organize Food Drives  
Client Intake from 10-2, M-F  
Filing  
Data Entry  
Set up and Clean up at 2nd Saturday  
Preparing mail outs  
Clean and Organize Pantry and Clinic

also email her at [lighthousechristianministries@gmail.com](mailto:lighthousechristianministries@gmail.com)

If you are interested in a group project, our 2nd Saturday Celebration is a great place to start. We can also set you up with and area senior who made need help in their home. Please contact Lauren White for more information.

### General Food:

Rice  
Pasta  
Peanut Butter  
Canned Vegetables  
Canned Fruit

### Volunteer Needs:

Process Donations  
Assist Clients/Donors with donations or food  
Help organize and keep the store clean

*Some needs are for longer term commitments and may need training. If you are interested in volunteering for short or long term commitments please call Lauren White at 281-339-3033. You may*